

MARKETING

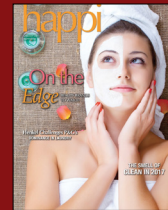
OUR INVOLVEMENT

We have served and developed relationships with leading companies in the industry, including:

- Clariant
- Lonza
- BASF
- AkzoNobel
- Shell
- Lubrizol

We participate in industry Associations and Trade Shows, including:

- Society of Chemical Mfrs. and Affiliates
- National Assoc. of Chem. Distributors
- American Chemical Society
- CPhI



Look for our articles in **happi Magazine**

ROPELLA INDUSTRY EXPERTISE

This creative industry, concerned with anticipating customers' future wants and needs, is vital in creating, communicating, and delivering the brand message to the correct individuals. From content to brand to event to relationship marketing, marketers deliver informative materials to potential customers. Today, marketers must ensure the correct platform is used to connect with the targeted audience.

Ropella's mission is to build lasting relationships between High Potential A-Player Talent, Backable CEO's, Board Members, SME's and Transformational Leaders. Our primary goal; providing ROI value towards growing the great companies we invest our time, talent and treasure into.

Building teams worldwide, in all functional areas and at all levels, with the best possible talent is one of the highest priorities for transformational leaders - because we all know - **the Team with the Best Talent Wins** Especially so, in fast growing organizations.

OUR SOLUTIONS

With over 35 years as a global search leader, delivering the Most Advanced Search Execution Capabilities, Ropella has proven many times over, to be extremely well-versed at solving the most challenging "needle in a haystack" searches. While at the same time managing Talent Selection & Development as a Primary Asset for ROI.



As a bestselling author of *The Right Hire* and a highly experienced practitioner, Patrick Ropella developed the **SMART Search System**®, regarded as one of the most well respected, Talent Centric Executive Search Solutions available.



GROWING GREAT COMPANIES
Through Global Talent Discovery,
Assessment & Connection

850.983.4777 | ROPELLA.COM